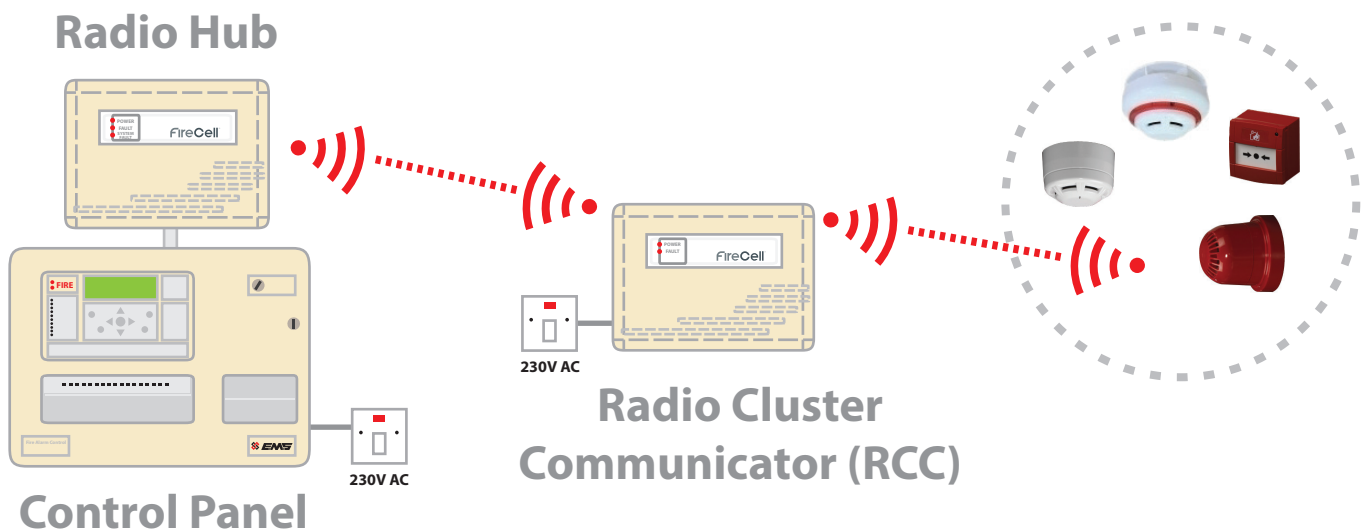


FireCell



FIRECELL SYSTEM QUICK START GUIDE



FREE DOWNLOAD
SCAN HERE

Available on the
App Store



FireCell Quick Start Guide Issue 4
www.emsgroup.co.uk

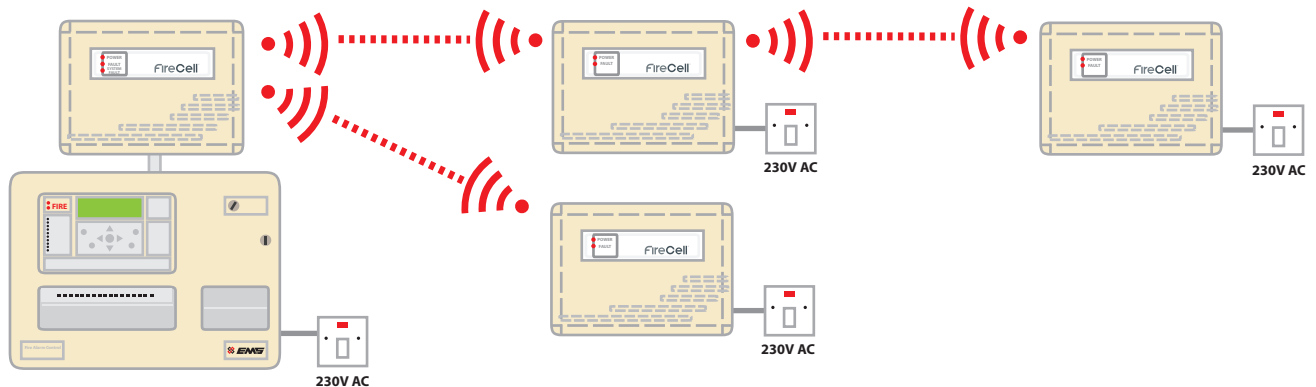
FREE DOWNLOAD
SCAN HERE

Available in
Android Market



Step 2 Install the RCCs:

The survey report will also detail the locations of the Radio Cluster Communicators (RCCs).



See FireCell Instruction Pack for more information.

Step 3 Log On the RCCs:

Go to Step 4 if the system has been supplied fully programmed.

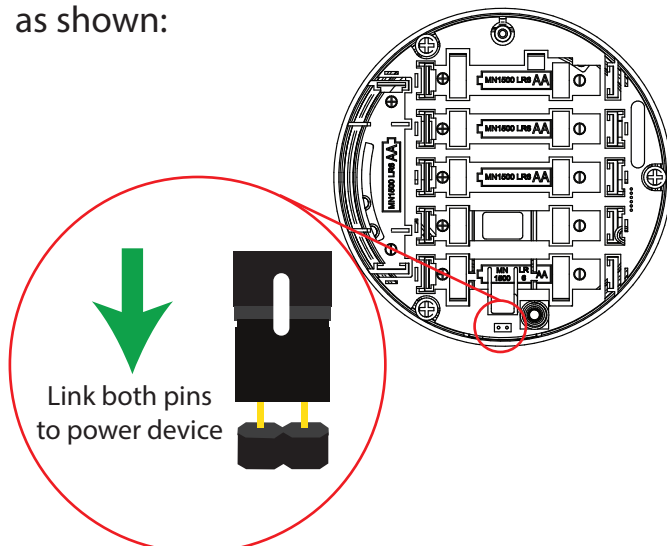
The RCCs can be logged on to the system using the RCCs ident number which is located on the side of the unit.

See FireCell Instruction Pack for more information.



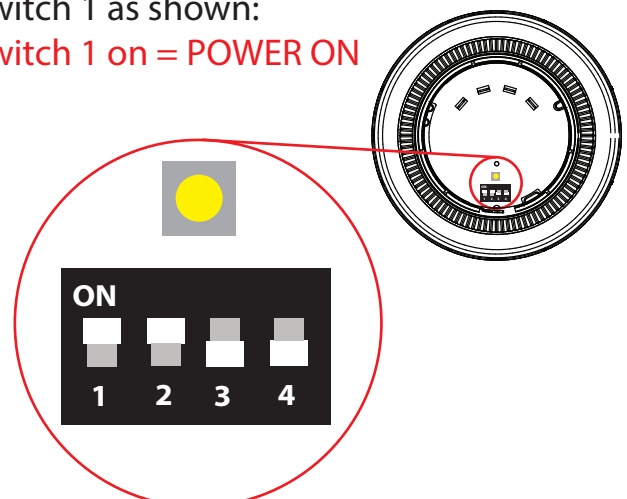
Step 4 Power Up the Devices:

Detectors, Sounders, Callpoints and Input/Output Units have power jumpers as shown:



Combined Sounder Detectors are powered by changing the orientation of Switch 1 as shown:

Switch 1 on = POWER ON

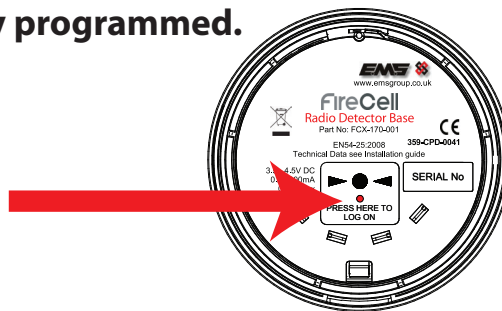


Step 5 Log on the Radio Devices:

Go to Step 6 if the system has been supplied fully programmed.

The device can now be logged on to the system. This can be achieved using the log on button or ident method. The log on button is located inside the unit.

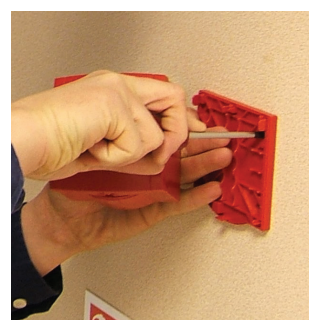
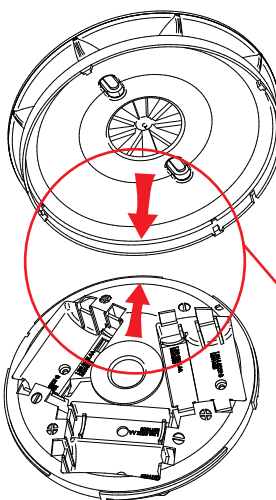
See FireCell Instruction Pack for more information



Step 6 Install the Radio Devices:

Note: When installing Combined Sounder Detectors, it is important that the tamper alignment markers are properly positioned to ensure correct operation and to prevent unnecessary tamper faults.

See FireCell Instruction Pack for more information.



Align tamper arrows **THEN** turn to lock into place

Step 7 Program the Control Panel:

Note: This step is not necessary if the system has been supplied fully programmed.

The Radio Hub, RCCs and all radio devices must now be added to the Control Panel ensuring the loop number and addresses programmed at the Radio Hub correspond to that programmed at the Control Panel. This can also be achieved using the Loop Explorer computer program.

See FireCell Instruction Pack for more information.



EMS
Radio Fire & Security
Systems Limited

EMS Group Head Office
Technology House
Sea Street
Herne Bay
Kent CT6 8JZ
United Kingdom

t: +44 (0) 1227 369570

f: +44 (0) 1227 369679

e: enquiries@emsgroup.co.uk

www.emsgroup.co.uk



FOLLOW US ON
twitter
@emstechnical



Fire Industry Association



british security industry association



The information contained within this literature is correct at time of publishing. The EMS Group reserves the right to change any information regarding products as part of its continual development enhancing new technology and reliability. The EMS Group advises that any product literature issue numbers are checked with its head office prior to any formal specification being written.